



## VIOLA | SDR22228

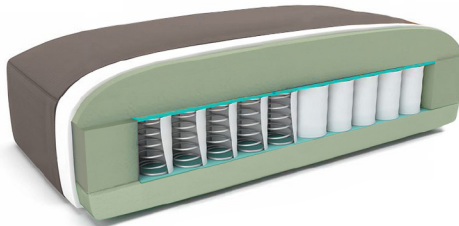
loveseat / condo sofa

### PRODUCT INFORMATION

Dimensions:	Total: 62"W 35"D 35"H
	Seat: 21"D 17"H Arm: 24"H
Cover:	100% Leather. Colour: Slate.
Finish:	Legs: Espresso
Weight:	100 lbs

### CARTON INFORMATION

Ctn. Size:	Total: 63"W 35"D 22"H.
Ctn. Cube:	30.51 Cu.Ft.
Ctn Weight:	110 lbs
# Item/Ctn:	1
# Ctn/Item:	1 (Bag Wrap / Cardboard Corners)
Assembly:	Some Assembly Required.



Pocket sprung seat provides the ultimate support platform ensuring proven long lasting personal comfort and durability: high resilience; longer life; even firmness throughout the cushions; individual support; increased level of comfort; improved appearance; precision stitching for resilience and style; and better cover performance especially with thick leathers. Understructure: genuine hardwood frame for stability, durability and quality; corner blocks for added strength and longer life.

### PRODUCT WRITE UP

The answer to the cozy comfort. As chic as it is comfortable, the upholstered modern bench frame features a stylishly geometric shape that pops out against any modern décor while its tapered espresso block legs adds strength and ensures life-long stability. Perfectly scaled, this loveseat incorporates the right combination of beauty, durability and utility. The square-esque structure of the framing makes the it stable and capable of being matched with almost any motif or decor. Contract Quality.

### COVER CONTENT:

100% Leather

### WOOD CONTENT:

Hardwood

### COVER ABRASION:

N/A